

2.9T UNIC **URW-295** CRANE





MINICRANESNZ

022 315 6074

MINI & SPIDER CRANES
FOR HIRE

LOAD CHART

SECOND STAGE EXTENDED 2.53 – 4.075m BOOM LENGTH

Working radius		m	up to 1.0	1.4	1.5	1.8	2.0	2.5	3.0	3.5	3.835
Outrigger	Max-extended	kg	2,900	2,900	2,650	2,250	2,050	1,650	1,300	1,000	900
	Min-extended	kg	2,000	2,000	2,000	1,450	1,100	650	490	350	250

THIRD STAGE EXTENDED 4.075 – 5.61m BOOM LENGTH

Working radius	m	up to 2.2	2.5	2.9	3.0	3.5	4.0	4.5	5.0	5.37	
Outrigger	Max-extended	kg	1,350	1,350	1,350	1,250	1,000	800	650	520	430
	Min-extended	kg	800	650	530	500	380	280	220	160	120

FOURTH STAGE EXTENDED 5.61 – 7.13m BOOM LENGTH

Working radius Outrigger		m	up to 3.3	3.8	4.0	4.5	5.0	5.5	6.0	6.5	6.89
	Max-extended	kg	850	850	750	600	500	420	360	320	270
	Min-extended	kg	420	340	300	250	190	140	100	80	60

FIFTH STAGE EXTENDED 7.13 – 8.65m BOOM LENGTH

Working radius Outrigger		m	up to 3.8	4.1	4.5	5.0	5.5	6.0	6.5	7.0	8.0	8.41
	Max-extended	kg	550	550	450	370	310	270	230	200	150	130
	Min-extended	kg	350	290	250	200	160	130	100	70	40	30



022 315 6074

admin@minicranesnz.co.nz

www.minicranesnz.co.nz

We have the
RIGHT CRANE
for your job



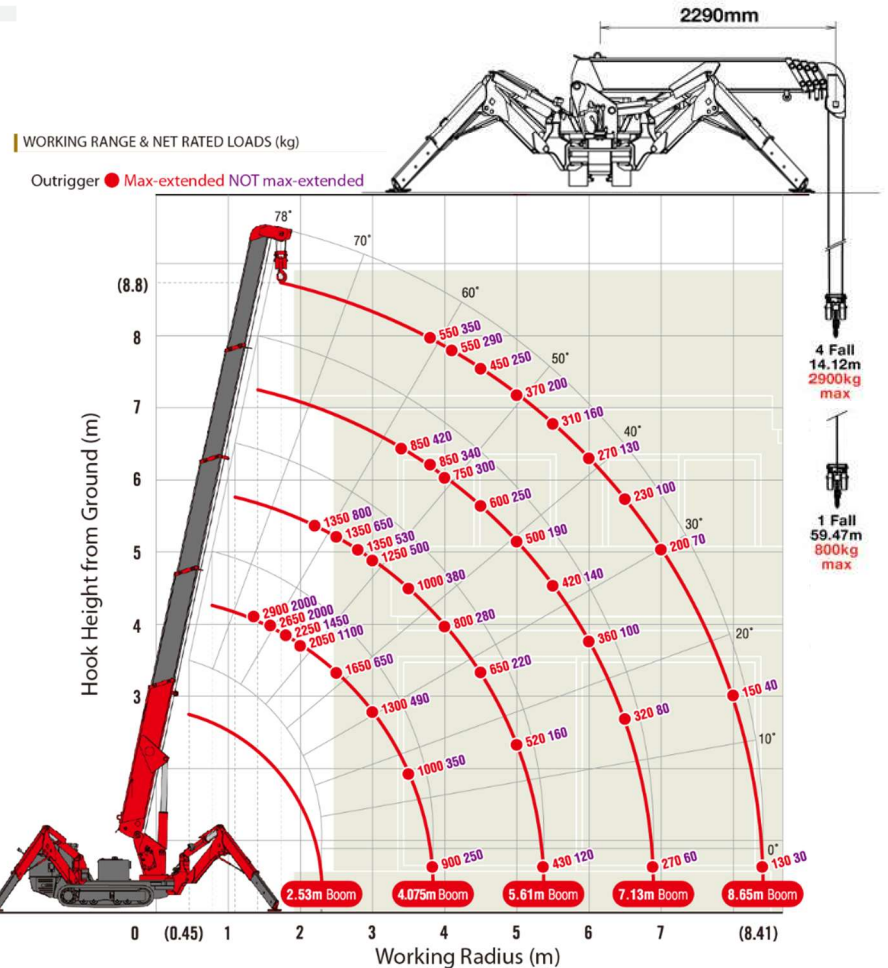
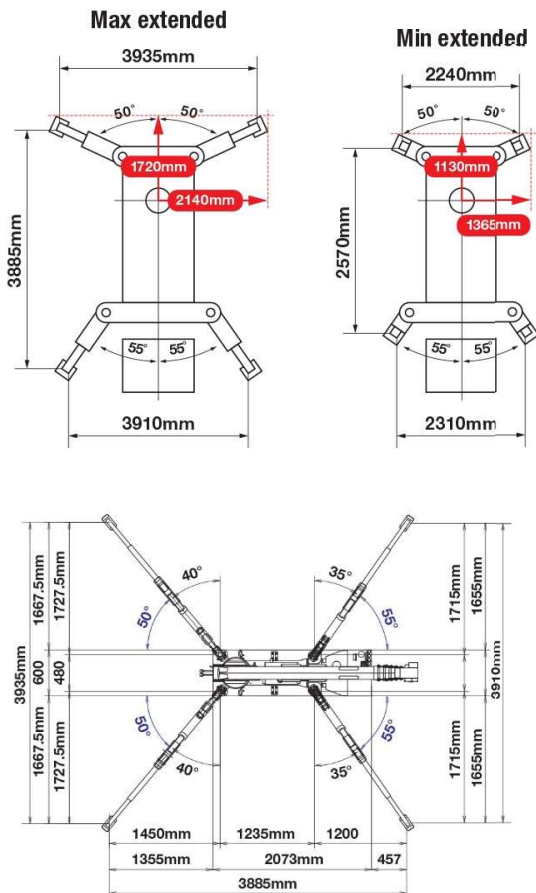
MINICRANESNZ

022 315 6074

MINI & SPIDER CRANES
FOR HIRE

DIMENSIONS

OUTRIGGER POSITIONS & BOOM RANGE CHART



OVERALL SIZE



022 315 6074
admin@minicranesnz.co.nz
www.minicranesnz.co.nz

We have the
RIGHT CRANE
for your job

SPECIFICATIONS

CRANE CAPACITY	capacity:	2.9t x 1.4m
MAX WORKING RADIUS	max:	8.41m
MAX LIFTING HEIGHT	approx:	8.8m (9.8m with fly jib, 10.47m with fixed hook)
ROPE LENGTH	max:	11.7m (4 fall), 49.0m (1 fall)
DIMENSIONS	folded:	2690mm (2905mm diesel & electrical dual) (l) x 600mm (w) x 1375mm (h)
WEIGHT	unladen:	1850kg (1950kg with electric option, 1920kg with diesel option, 2090kg with diesel and electric dual option)
POINT LOADINGS	Due to the many variables involved, point loadings are only available on request	
HOOK SPEED	approx:	10m/min (with 4 layers and 4 falls)
TELESCOPIC SYSTEM	boom length: telescoping speed: boom type:	2.53 - 8.65m 6.12m/20 seconds 5 section hydraulically telescoping boom, hexagonal box construction
DERRICKING ANGLE/SPEED	approx:	0 - 78°/11 seconds
SLEWING ANGLE/SPEED	approx:	360° (continuous) 1.5min rpm
TRACTION SYSTEM	drive: travel speed: gradeability: track ground length: track ground pressure: track width:	hydrostatic, stepless forward and reverse 0 - 2.3km/h 20° 1050 mm 48kPa (0.49kg/cm²) 180mm
ENGINE	manufacturer: fuel: maximum output: starting method: tank capacity:	Mitsubishi (Kubota diesel) petrol with LPG and electric options, diesel with electric option 9.6kW (13PS) / 2000min rpm electric and recoil start as standard 6 litre petrol, 9 litre diesel
ELECTRIC MOTOR	power: voltage:	3.7kW 400v AC 50/60Hz
STANDARD EQUIPMENT	computer controlled moment limiter (safe load indicator), radio remote control, overwinding alarm, computer controlled intelligent voice warning system, multi-function operation by radio remote control, intelligent throttle activation, automatic hook stow, overload warning alarms, overload warning lamps, working area limitation, 4 fall / single fall, dual petrol electric or dual diesel electric options, low marking tracks, 700kg searcher/fly-jib	